

Chapin Art Trail

A Community Art Project

In partnership with the Town of Chapin, the Crooked Creek Art League has established the Chapin Arts Trail. It is designed to stir the public imagination and sense of creativity as well as beautify the community with public art displays created by local artists. The trail includes currently installed public art pieces and galleries throughout the greater Chapin area.

This area is rich with talented local artists and art lovers. There are quite a few pieces of public art throughout the area and new ones are being added all the time.

One of the best parts of visiting an area is finding all the wonderful things that make it unique. Artwork is a vital part of that and enriches our daily lives. Murals, statuary, gardens and sculptures make places more interesting and memorable. The Chapin Art Trail is designed to celebrate public artwork and make it easier for members of the public to find and enjoy. You are encouraged to participate in an ongoing self-guided tour of the area and its many works of public art. You can go in any order and view as many as you like during your visit.

SCAVENGER HUNT! Can You Find Them All?

Let the Hunt commence! Find all the great art on the Chapin Art Trail and correctly identify the requested information for each piece of artwork (see inside) to solve the puzzle. Take a photo of your form and use the scan code at the bottom of the form to submit it by email. Once each quarter, a name will be drawn from all forms received that quarter. Winners will be notified by email. One entry per person, please.

Crooked Creek Art League

CCAL

In 1995, a small group joined together in Chapin to encourage and stimulate the practice and appreciation of creative arts, educate and encourage each other's work, and assist with the growth of visual arts in the community. This small group became known as the Crooked Creek Art League (CCAL). Today, Crooked Creek Art League has over 140 members. The League includes professional and amateur artists and artisans who work in all mediums.

Meeting once a month at Crooked Creek Park, members learn from presenters, attend workshops, gain opportunities to display their artwork at partnered public galleries throughout the Midlands, and enter annual shows.

Whether novice or professional; a lover of the arts or merely "art curious," all are welcome at the CCAL. Stop in and visit a meeting or join us!



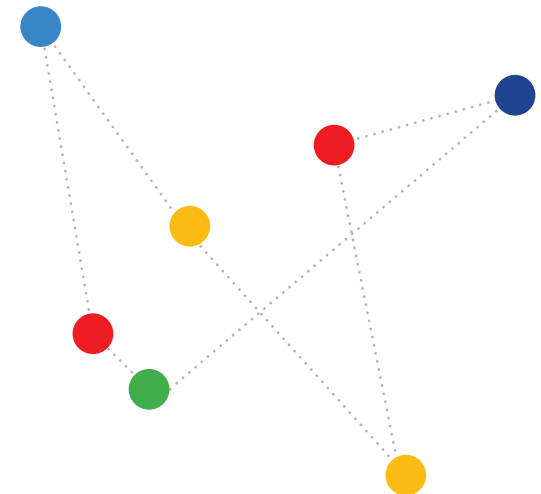
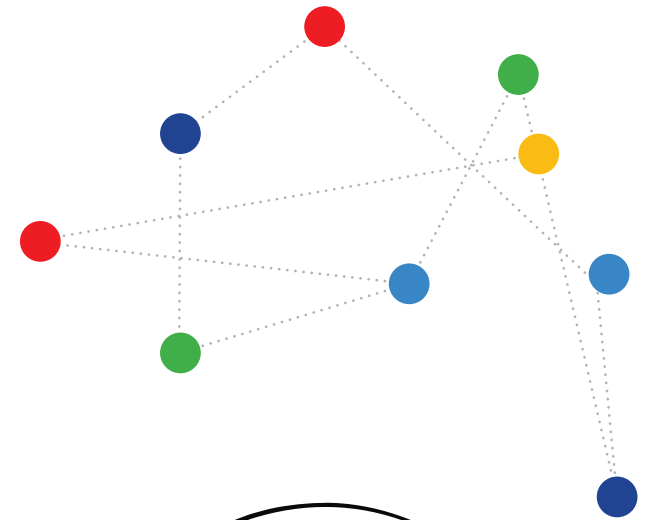
CrookedCreekArt.org
[@CrookedCreekArtLeague](https://www.instagram.com/CrookedCreekArtLeague)



This organization is funded in part by the South Carolina Arts Commission which receives support from the National Endowment for the Arts. Additional support in the grant comes from the John and Susan Bennett Memorial Arts Fund of the Coastal Community Foundation of South Carolina.



This project was supported by a Connected Communities grant from Central Carolina Community Foundation.



The game is simple. At each piece of artwork, you will find a small sign. On the front of the sign is a QR code like the one shown below. Scan the code on the sign using a smartphone. It will take you to a webpage full of information about the artist and the artwork at that location. At the bottom of the webpage, you will find a Scavenger Hunt Clue. Each artwork will have a different clue that looks something like this:

Enter the third word from the artwork description on the sign						
Q4	P2	J3	F2	A3	G3	D2

To complete the puzzle, find the word clue for each artwork by using your phone to scan the code on the sign. Using the coordinates from the clue, place each individual letter from the word clue in the designated space on the form below. The answer to letters in some designated spaces of the solution diagram *may* be found in more than one artwork word clue. Each artwork will have a different word clue. When the puzzle is completed, a message will be revealed reading across the diagram that will look something like this:

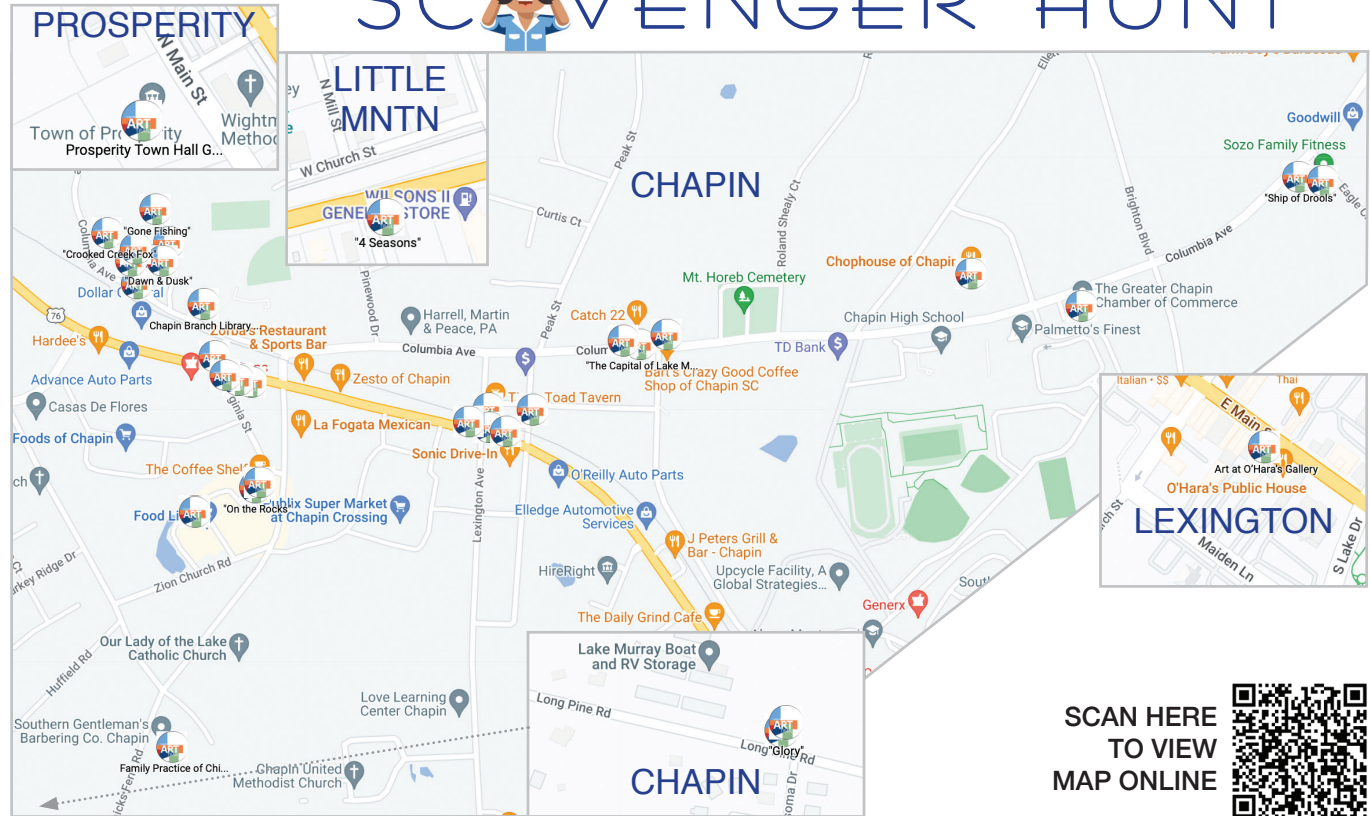
	A	B	C	D	E	F	G	H	I	J	K	L	M	N
1	A	R	T	&	P	U	Z	Z	L	E	S	A	R	E
2	A	L	O	T	O	F	U	N	!					

Submit your completed puzzle entry using the scan code or via email. Once each quarter, Crooked Creek Art League will draw a prize winner at random from entries received for that quarter. Only one entry per person please. *Have fun!*

Chapin Art Trail visitors tour at their own risk. Neither Crooked Creek Art League nor individual property owners included on the Trail assume any liability. Please be respectful as you visit artworks on private property.

Welcome to The Chapin Art Trail

SCAVENGER HUNT



SOLUTION DIAGRAM

	A	B	C	D	E	F	G	H	I	J	K	L	M	N	O	P	Q	R	S	T
1	"																			
2							,													
3																				
4						"														

PARTICIPANT INFO

Name _____

Email _____

Scan here or simply email a legible photo of your puzzle form to CrookedCreekArtLeague@gmail.com. Winners will be notified by email.



THANK YOU TO OUR HOST SPONSORS!